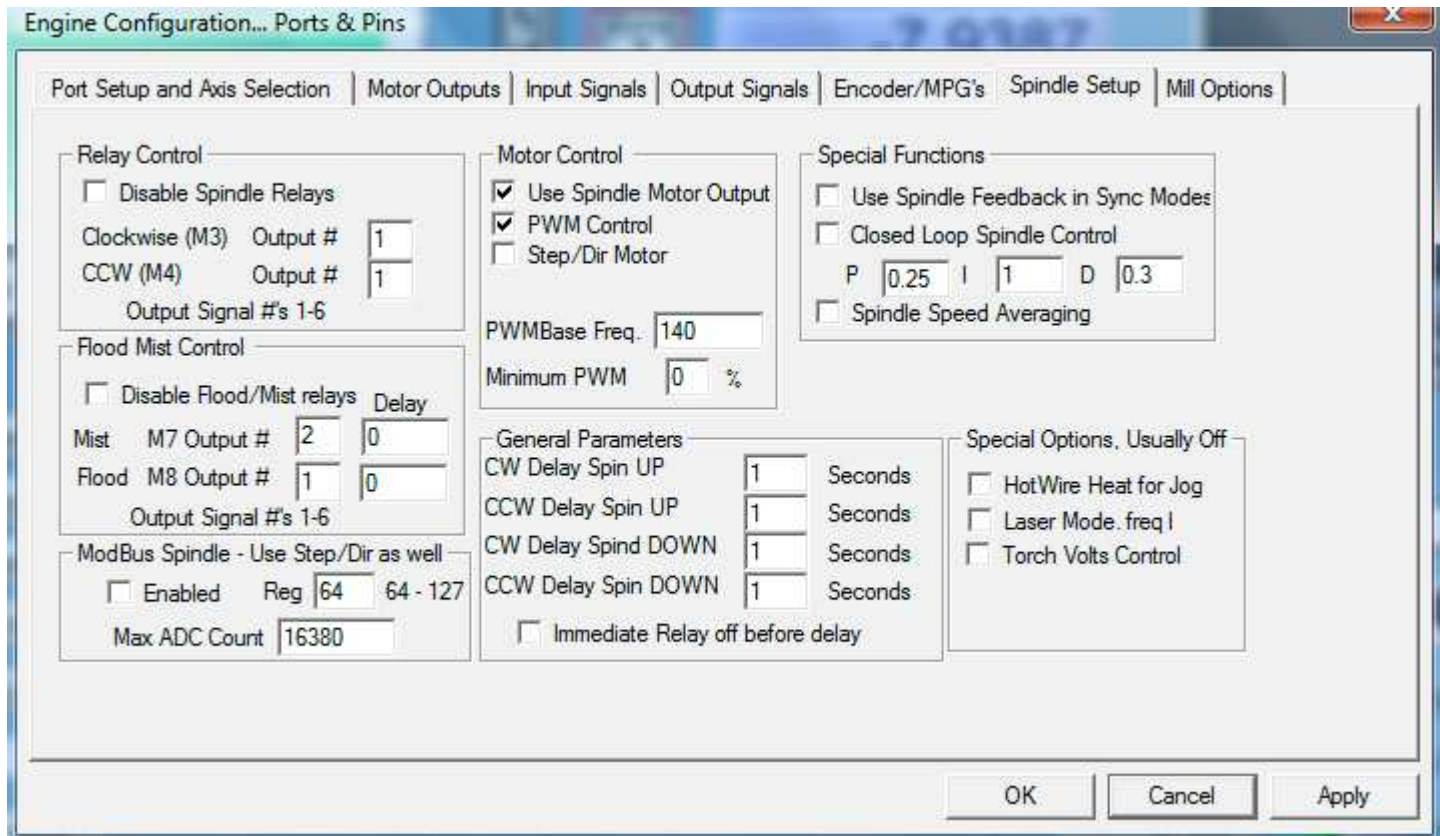
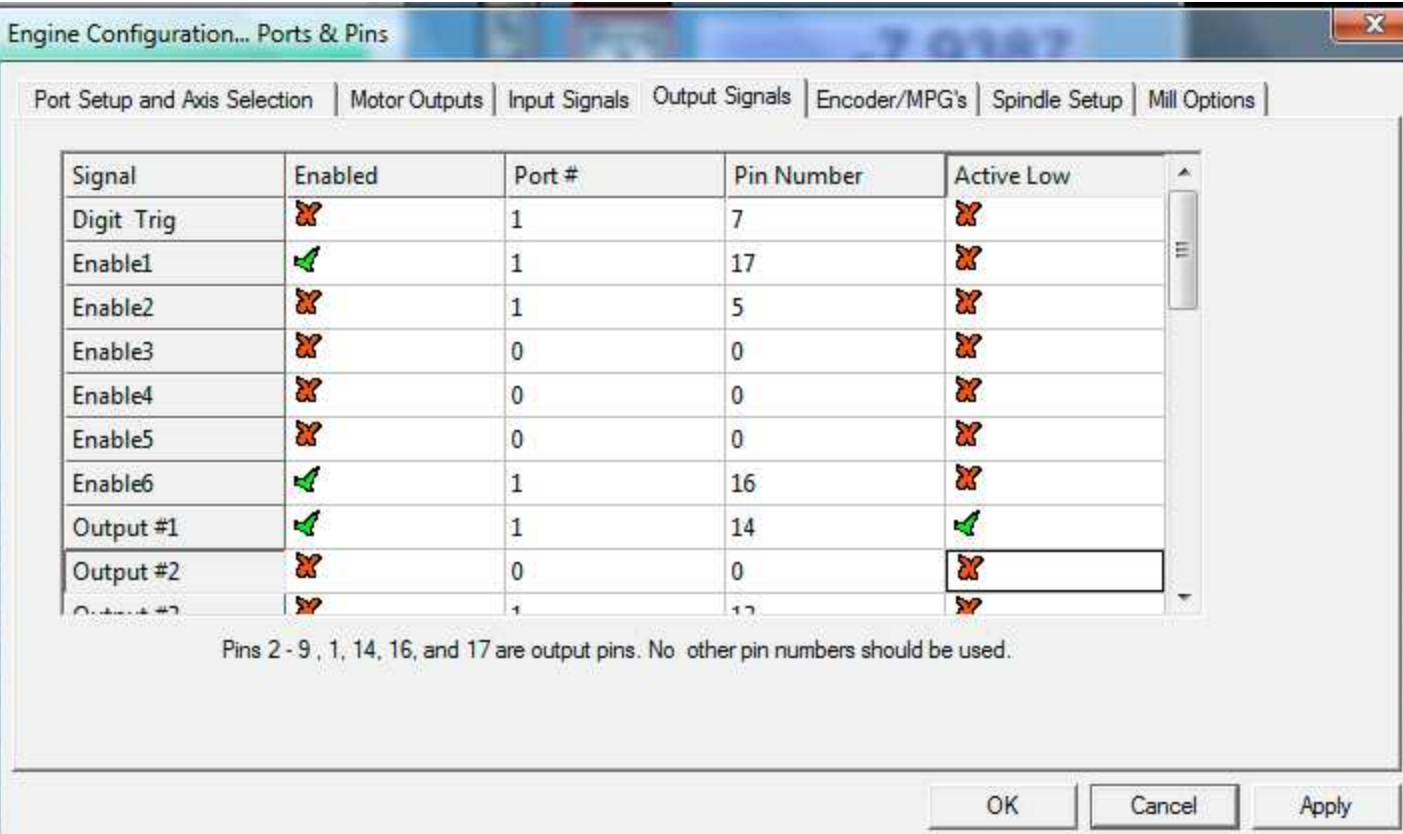


## MAXCOOL Set up in MAX III Software



**Under Config/Ports & Pins/Spindle Set Up make sure that Flood Mist Control has an unchecked box for disable Flood/Mist Relays as shown above. Also make sure M8 shows out put # 1, as shown. Hit Apply.**

**Next Open the Output Signals Tab under Ports & Pins and Enable Output 1 with a green check mark with Port #1 and Pin #14 shown in the appropriate columns. There also should be a green check mark under Active low. All as shown below.**



**After checking M\* output in MDI mode, make sure that you save your configuration for the next session by clicking Config/Save Settings.**