

Configuring for 5th Axis

- 1) While in MAX III click on Config/Ports & Pins/Motor Outputs .The following screen will pop up. Enable B axis by clicking on the red X and changing it to a green check mark. Fill in the other columns as follows:

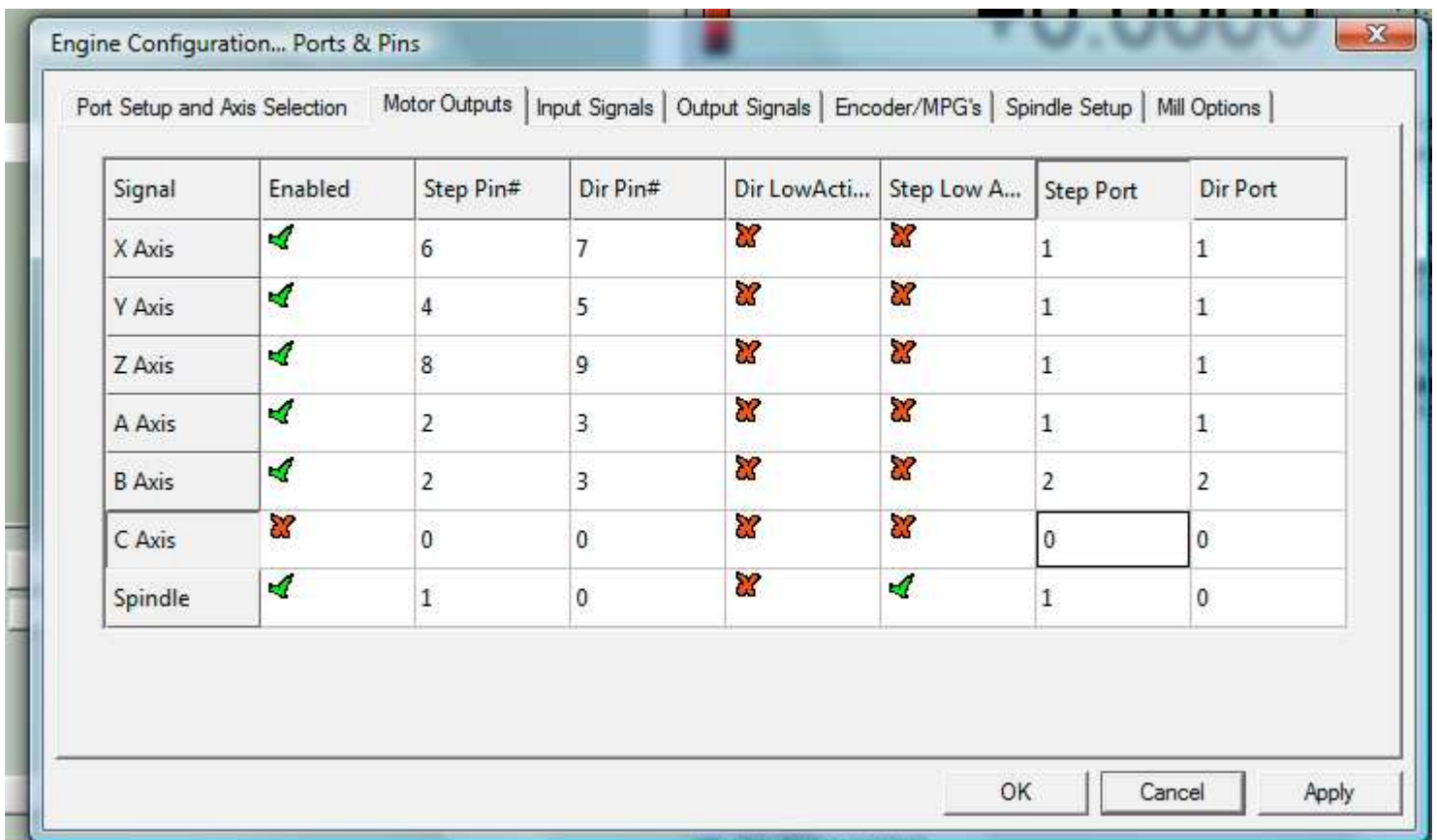
Step Pin # = 2

Dir Pin # = 3

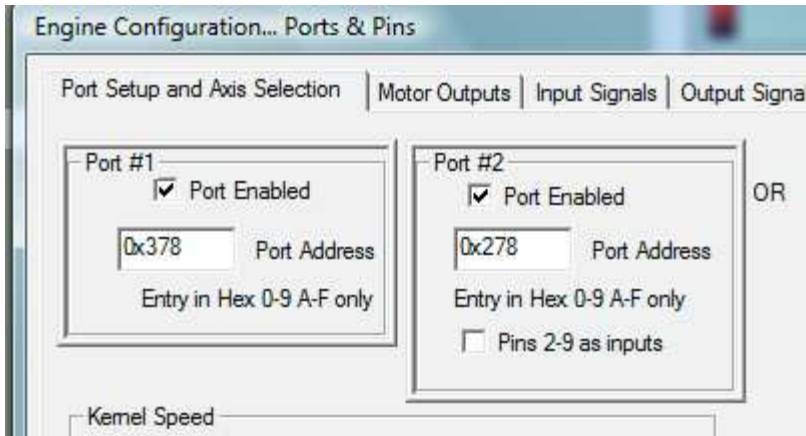
Step Port = 2

Dir Port = 2

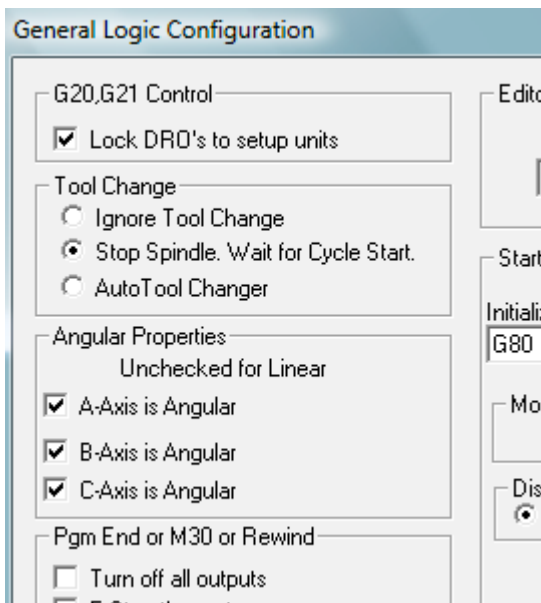
Click Apply



- 2) Click Config/Ports & Pins and enable port number 2 as well as typing in the port address for the new parallel card you have installed. You can find this info in your Windows control panel under device manager. Click Apply and OK.



- 3) You can now change your new axis properties to either Linear or Angular by clicking on Config/General Cofig/Angular Properties as below.



You may also wish to tune the new axis motor under Config/Motor Tuning

Make sure when completed click on Config/Save Settings to save all new changes to the XML file on your hard drive.